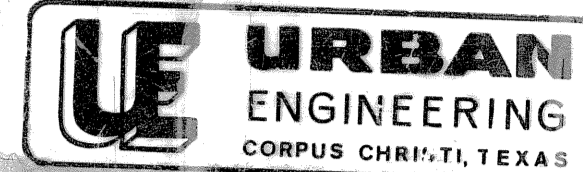


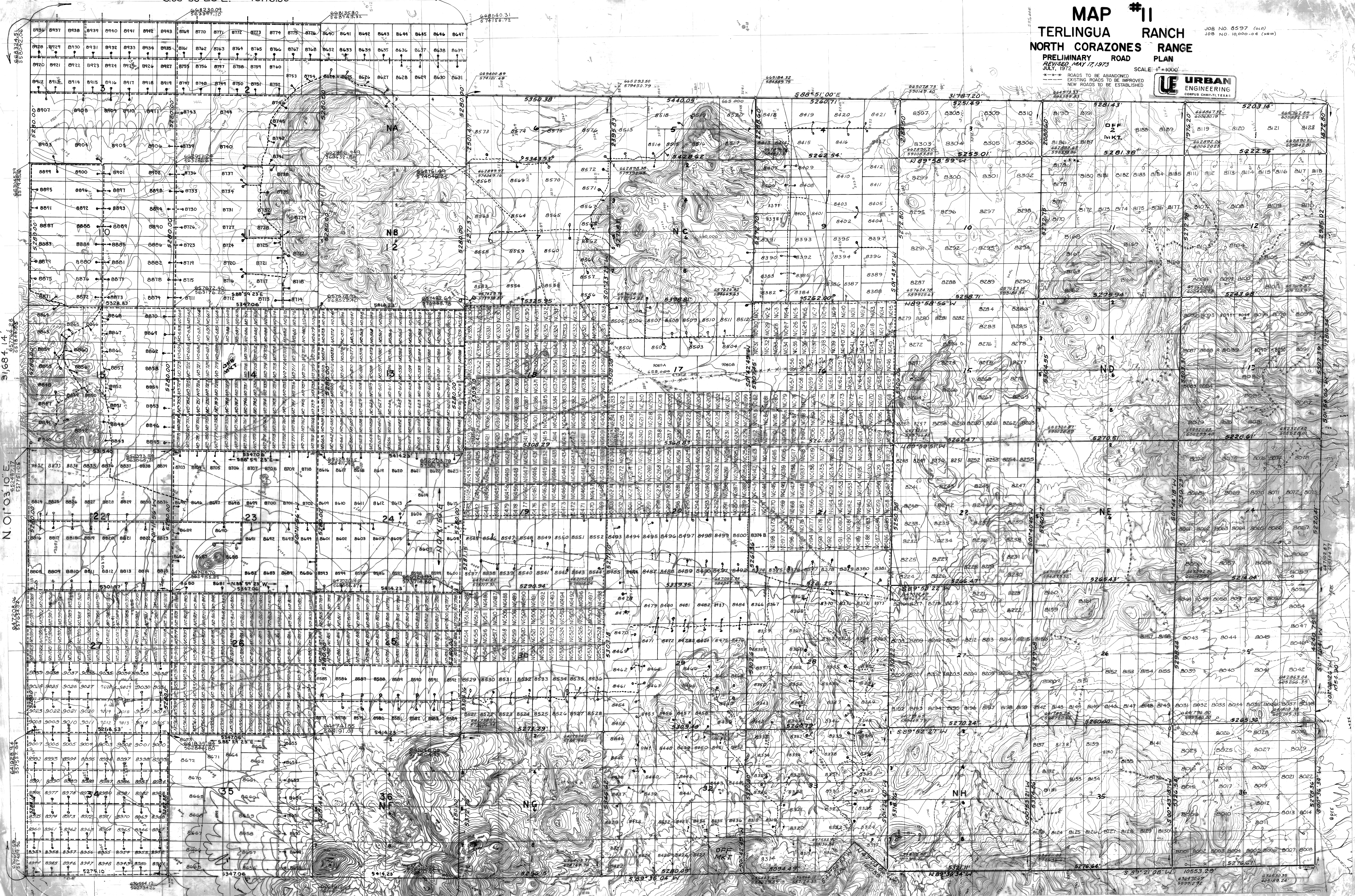
S88°59'23"E 16116.99'

**MAP #11**  
**TERLINGUA RANCH**  
**NORTH CORAZONES RANGE**  
 PRELIMINARY ROAD PLAN  
 REVISED MAY 17, 1973  
 JULY, 1973  
 SCALE: 1"=4000'

- - - - ROADS TO BE ABANDONED  
 - - - - EXISTING ROADS TO BE IMPROVED  
 - - - - NEW ROADS TO BE ESTABLISHED



URBAN ENGINEERING  
CORPUS CHRISTI, TEXAS



S1684.14

N 01°03'00"

S47208.04

S19183.71

S25755.74

N84°00'18"W

16036.39'