

**SURVEYOR'S STATEMENT:**

- DOCUMENTS OF RECORD CONSULTED WERE:
1. CLO NOTES & MAP, T 20N ~ R 14E, WHEELER, 1882/1883.
  2. CLO NOTES & MAP, T 19N ~ R 14E, MATTHEWS, STRICKLER, 1917/1921.
  3. BLM NOTES & MAP, T 20N ~ R 14E, GILBERT, 1968/1972.
  4. SHEETS 11 THRU 16 INCLUSIVE OF 52, ADOT PROJECT I-40-4(55) FLAGSTAFF - HOLBROOK HIGHWAY; LEUPP RD. - NAVAJO CO. LINE SECTION, COCONINO CO.
  5. ARIZONA STATE LAND DEPARTMENT MAPS:
    - a. SECTION 2, T 19N ~ R 14E, COCONINO COUNTY, INTERSTATE HWY. 40, LEUPP INTERCHANGE, SHEET: 1 OF 2, 6-30-69; REVISED: 1-15-79 & 4-3-87.
    - b. SECTION 4, T 19N ~ R 14E, COCONINO COUNTY, SHEET: 1 OF 2; 1-15-78; REVISED: 9-5-79 & 4-3-87.
  6. COCONINO COUNTY ASSESSOR'S MAPS.
  7. FIRST AMERICAN TITLE INSURANCE ~ FLAGSTAFF, REPORT NO 82305.

ALL CULTURAL FEATURES; TELEPHONE, POWER LINES ETC., ARE SHOWN AS THEY EXIST ON THE GROUND. THE POLES ON SINGLE POLE LINES, AND THE MIDPOINT BETWEEN POLES OF DOUBLE POLE LINES WERE ASSUMED TO BE ON EASEMENT CENTERLINES.

ON THE INTERESTS OF CLARITY, ALL AVAILABLE RECORD DISTANCES AND BEARINGS ARE NOT SHOWN. ORIGINAL PLATS AGREE REASONABLY WELL WITH MONUMENTS RECOVERED. IT APPEARS THAT PREVIOUS WORK MET OR EXCEEDED THE STANDARDS OF ACCURACY PREVAILING AT THE TIME OF THE WORK.

EQUIPMENT USED FOR THIS SURVEY IS STATE-OF-THE-ART ELECTRONIC DISTANCE MEASURING MACHINES AND OPTICAL THEODOLITES. THE UNADJUSTED DISTANCE CLOSURE WAS 1/40,000 I; THE UNADJUSTED ANGULAR CLOSURE WAS 4.1 SECONDS OF ARC.

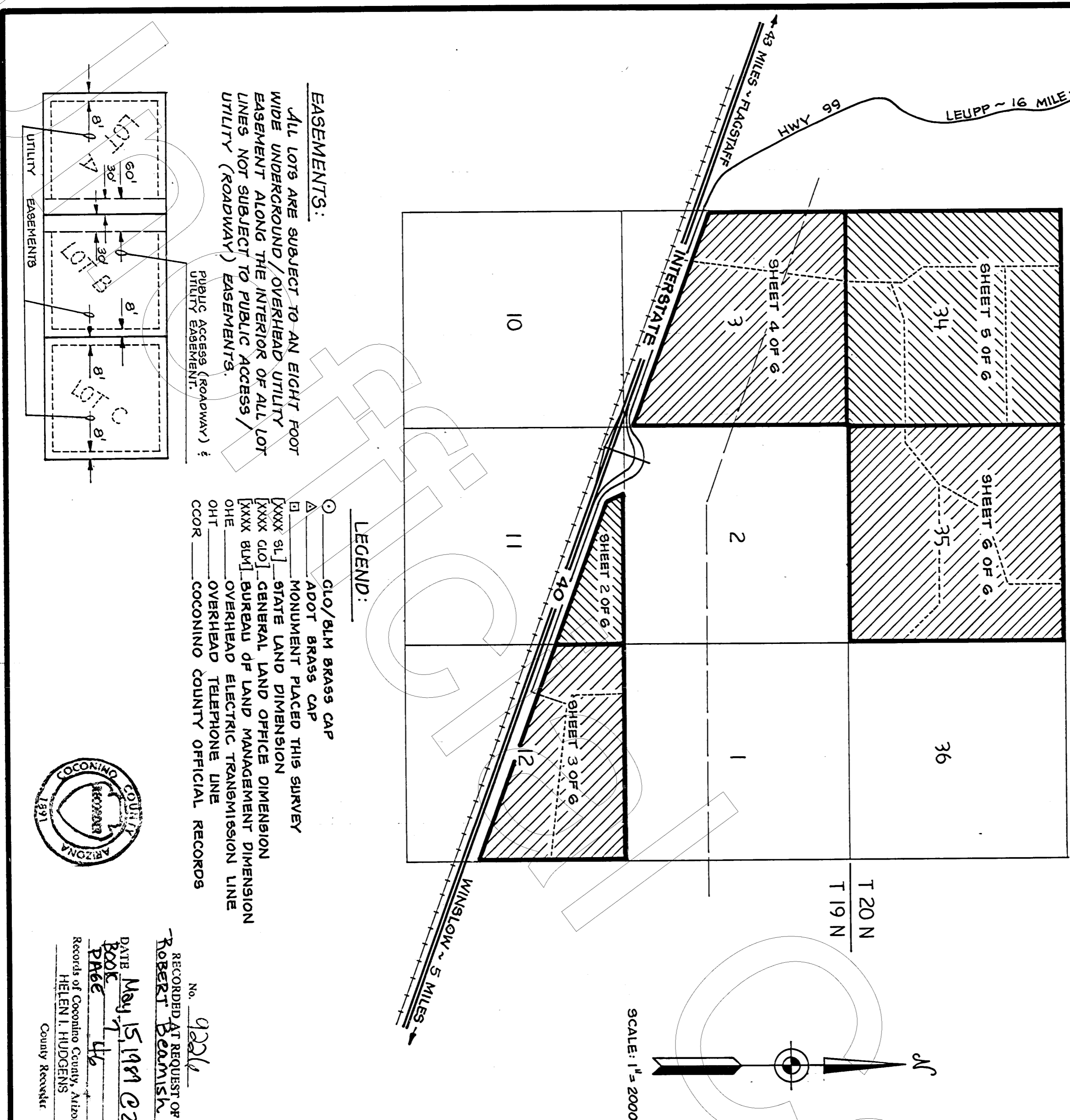
ALL WORK, FIELD AND OFFICE, WAS ACCOMPLISHED BY ME OR UNDER MY DIRECT SUPERVISION.

Robert Beamish, May 15, 1989  
 REGISTERED LAND SURVEYOR  
 14165  
 ROBERT BEAMISH  
 BEAMISH SURVEYING  
 ARIZONA LS 14165

**SURQUOISE RANCH**

COCONINO COUNTY, ARIZONA  
 THOSE PORTIONS OF SECTIONS 3, 11, & 12  
 TOWNSHIP 19 NORTH ~ RANGE 14 EAST;  
 NORTH OF INTERSTATE HIGHWAY 40; AND  
 SECTIONS 34 AND 35, TOWNSHIP 20 NORTH ~  
 RANGE 14 EAST, GILA AND SALT RIVER BASIN  
 AND MERIDIAN, ARIZONA.

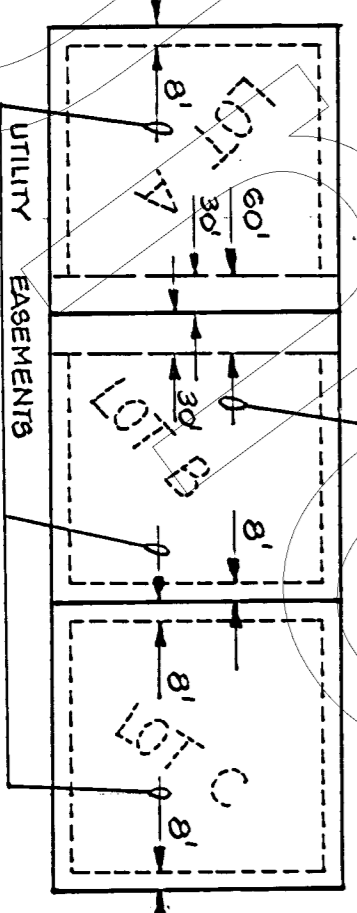
ROBERT BEAMISH, CIVIL ENGINEER ~ LAND SURVEYOR  
 216 WEST FIRST STREET  
 WINSLOW, ARIZONA 86047  
 (602) 289-3450



**EASEMENTS:**

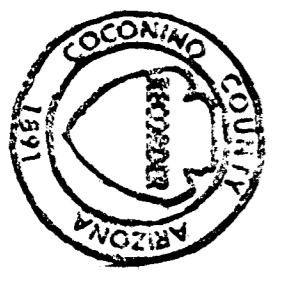
ALL LOTS ARE SUBJECT TO AN EIGHT FOOT WIDE UNDERGROUND/OVERHEAD UTILITY EASEMENT ALONG THE INTERIOR OF ALL LOT LINES NOT SUBJECT TO PUBLIC ACCESS/UTILITY (ROADWAY) EASEMENTS.

PUBLIC ACCESS (ROADWAY) & UTILITY EASEMENT



**LEGEND:**

- CLO/BLM BRASS CAP
- △ ADOT BRASS CAP
- MONUMENT PLACED THIS SURVEY
- [xxx sl] STATE LAND DIMENSION
- [xxx clo] GENERAL LAND OFFICE DIMENSION
- [xxx blm] BUREAU OF LAND MANAGEMENT DIMENSION
- OHE OVERHEAD ELECTRIC TRANSMISSION LINE
- OHT OVERHEAD TELEPHONE LINE
- COOR COCONINO COUNTY OFFICIAL RECORDS



RECORDED AT REQUEST OF  
 No. 92214  
 ROBERT BEAMISH

DATE May 15, 1989 @ 2:00  
 BOOK Page 46  
 Records of Coconino County, Arizona  
 HELEN I. HUDGENS  
 County Recorder

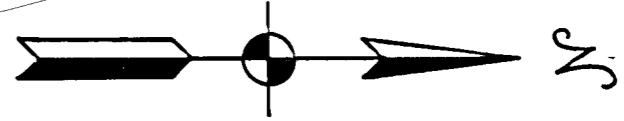
CUO BRASS CAP 1917 33 | 92  
 DISTURBED (STRUCK 310 | 511  
 BY VEHICLE ? LEARNING NW)

1/4 CORNER NOT FOUND,  
 NOTHING SET.

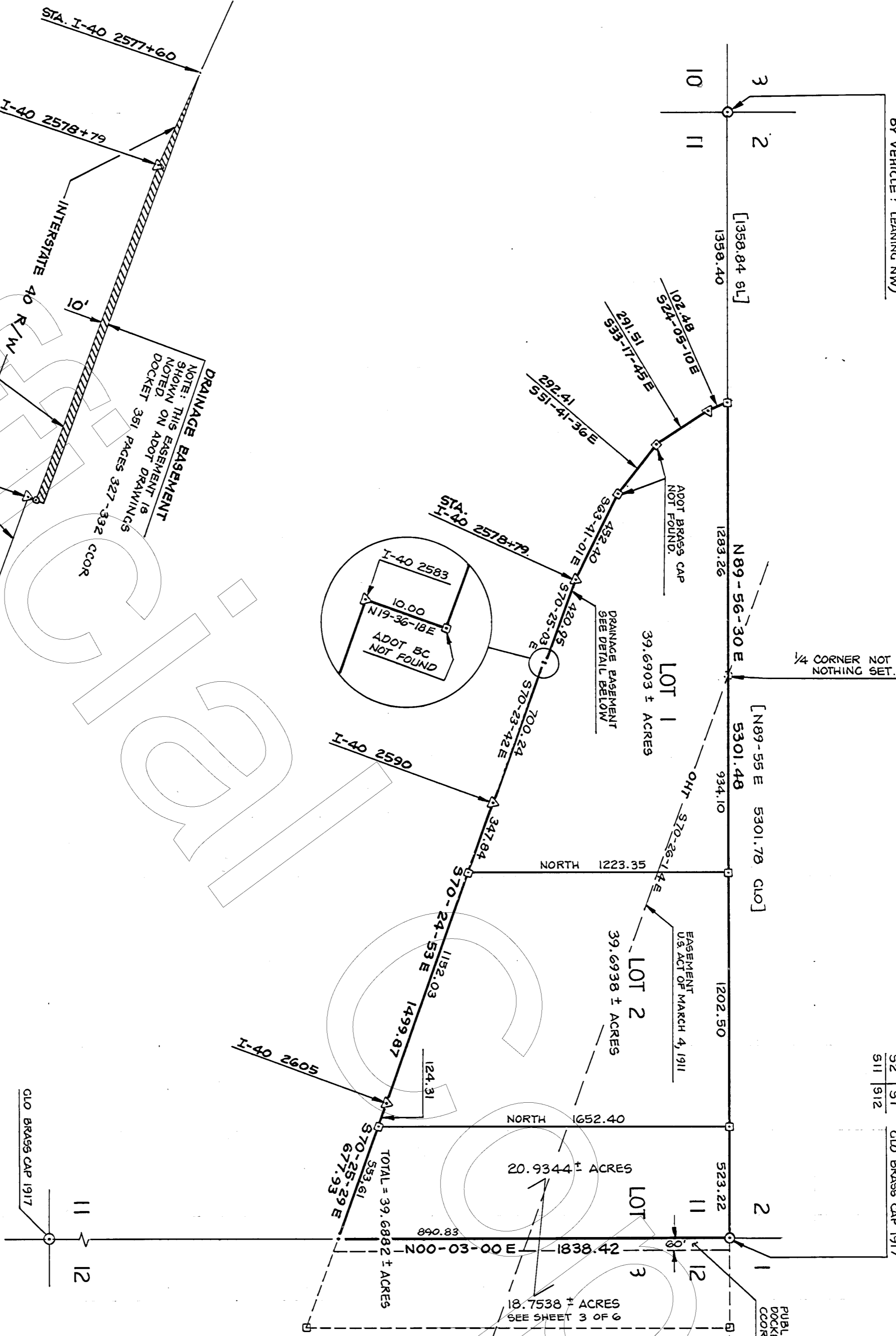
52 | 51  
 511 | 512  
 CUO BRASS CAP 1917

PUBLIC ACCESS EASEMENT  
 DOCKET 784, P.O. 771, 772  
 COOR.

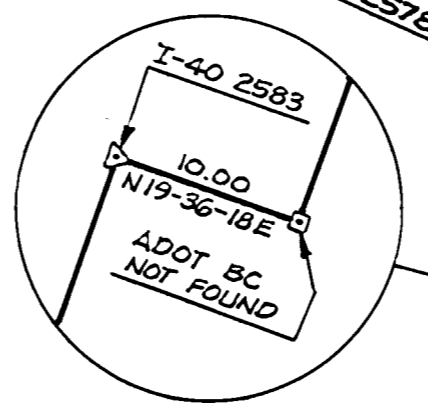
SCALE: 1" = 400'



THE BASIS OF BEARING OF THIS SHEET IS THE BEARING OF RECORD OF THE NORTH LINE OF THE ADJACENT SECTION 12, TOWNSHIP 19 NORTH, RANGE 14 EAST, AS SHOWN ON CUO MAP OF 1917 SUBDIVISION. ALL DISTANCES ARE GROUND.



DRAINAGE EASEMENT  
 NOTE: THIS EASEMENT IS SHOWN ON ADOT DRAWINGS DOCKET 361, PAGES 327-332 COOR



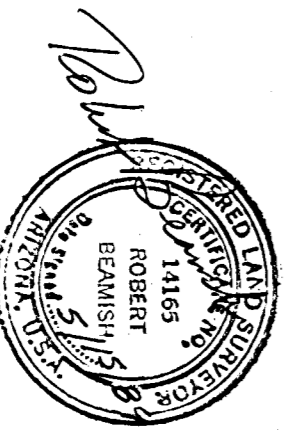
No. 9226  
 RECORDED AT REQUEST OF  
 ROBERT BEAMISH  
 DATE May 15, 1989 @ 2:00 PM  
 BOOK 7  
 Pg. 46A  
 Records of Coconino County, Arizona  
 HELEN I. HUDGENS  
 County Recorder



**PURPUISE RANCH**  
 COCONINO COUNTY, ARIZONA

SECTION 11

ROBERT BEAMISH, CIVIL ENGINEER - LAND SURVEYOR  
 216 WEST FIRST STREET  
 WINSLOW, ARIZONA 86047  
 (602) 289-3480



PUBLIC ACCESS (HIGHWAY) EASEMENT DOCKET 784, PG. 771, 772, CCOR.

SEE SHEET 2 OF 6  
20.9344 ± ACRES

TOTAL = 39.6882 ± ACRES

LOT 11

LOT 3

LOT 12

LOT 2

LOT 4

LOT 5

LOT 6

LOT 7

LOT 8

LOT 9

LOT 10

LOT 11

LOT 12

BC-GLO 912 | 911 | 912

BC-GLO 912 | 911 | 912

BC-GLO 912 | 911 | 912

BC-GLO 912 | 911 | 912

BC-GLO 912 | 911 | 912

BC-GLO 912 | 911 | 912

BC-GLO 912 | 911 | 912

BC-GLO 912 | 911 | 912

BC-GLO 912 | 911 | 912

BC-GLO 912 | 911 | 912

BC-GLO 912 | 911 | 912

BC-GLO 912 | 911 | 912

BC-GLO 912 | 911 | 912

1838.42

18.7538 ± ACRES

1989.38

363.25

383.05

1404.71

39.8342 ± ACRES

1645.56

39.6701 ± ACRES

1696.59

39.6691 ± ACRES

1746.48

39.6969 ± ACRES

1794.96

2641.11

2643.07

1073.11

2643.07

1073.11

2643.07

1073.11

2643.07

1073.11

2643.07

1073.11

2643.07

1073.11

2643.07

1073.11

2643.07

1073.11

2643.07

1073.11

2643.07

1073.11

2643.07

1073.11

2643.07

1073.11

2643.07

1073.11

ADOT NOTES  
BASIS CAP PLACED  
NOTHING FOUND

ADOT NOTES  
BASIS CAP PLACED  
NOTHING FOUND

ADOT NOTES  
BASIS CAP PLACED  
NOTHING FOUND

ADOT NOTES  
BASIS CAP PLACED  
NOTHING FOUND

ADOT NOTES  
BASIS CAP PLACED  
NOTHING FOUND

ADOT NOTES  
BASIS CAP PLACED  
NOTHING FOUND

ADOT NOTES  
BASIS CAP PLACED  
NOTHING FOUND

ADOT NOTES  
BASIS CAP PLACED  
NOTHING FOUND

ADOT NOTES  
BASIS CAP PLACED  
NOTHING FOUND

ADOT NOTES  
BASIS CAP PLACED  
NOTHING FOUND

ADOT NOTES  
BASIS CAP PLACED  
NOTHING FOUND

SEE DETAIL BELOW

SEE DETAIL BELOW

SEE DETAIL BELOW

SEE DETAIL BELOW

SEE DETAIL BELOW

SEE DETAIL BELOW

SEE DETAIL BELOW

SEE DETAIL BELOW

SEE DETAIL BELOW

SEE DETAIL BELOW

I-40 2625 ± 80' ±  
2625 ± 80' ±

I-40 2630

I-40 2640

I-40 2650

I-40 2660

I-40 2670

I-40 2680

I-40 2690

I-40 2700

N70-26-26 W 65.90

N70-26-26 W 65.90

N70-26-26 W 65.90

N70-26-26 W 65.90

N70-26-26 W 65.90

N70-26-26 W 65.90

N70-26-26 W 65.90

N70-26-26 W 65.90

N70-26-26 W 65.90

LOT 12  
5727 ± 30 FT  
0.1315 ± ACRES  
SIGN SITE  
(EXISTING SIGN)

LOT 12  
5727 ± 30 FT  
0.1315 ± ACRES  
SIGN SITE  
(EXISTING SIGN)

LOT 12  
5727 ± 30 FT  
0.1315 ± ACRES  
SIGN SITE  
(EXISTING SIGN)

LOT 12  
5727 ± 30 FT  
0.1315 ± ACRES  
SIGN SITE  
(EXISTING SIGN)

LOT 12  
5727 ± 30 FT  
0.1315 ± ACRES  
SIGN SITE  
(EXISTING SIGN)

LOT 12  
5727 ± 30 FT  
0.1315 ± ACRES  
SIGN SITE  
(EXISTING SIGN)

LOT 12  
5727 ± 30 FT  
0.1315 ± ACRES  
SIGN SITE  
(EXISTING SIGN)

LOT 12  
5727 ± 30 FT  
0.1315 ± ACRES  
SIGN SITE  
(EXISTING SIGN)

LOT 12  
5727 ± 30 FT  
0.1315 ± ACRES  
SIGN SITE  
(EXISTING SIGN)

ADOT NOTES  
THIS BASIS CAP AS  
ON SECTION LINE

ADOT NOTES  
THIS BASIS CAP AS  
ON SECTION LINE

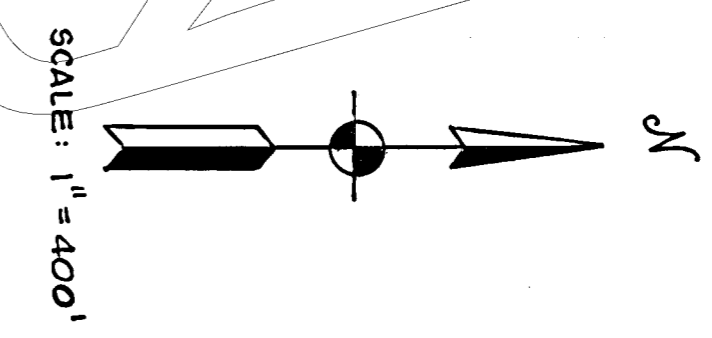
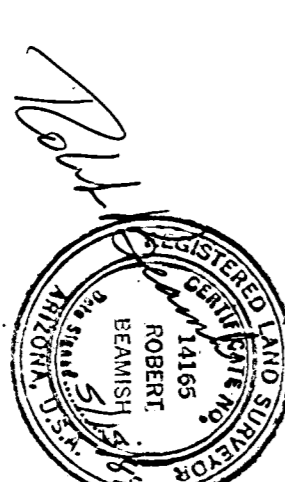
ADOT NOTES  
THIS BASIS CAP AS  
ON SECTION LINE

ADOT NOTES  
THIS BASIS CAP AS  
ON SECTION LINE

ADOT NOTES  
THIS BASIS CAP AS  
ON SECTION LINE

ADOT NOTES  
THIS BASIS CAP AS  
ON SECTION LINE

RECORDED AT REQUEST OF  
ROBERT BEAMISH  
No. 92214  
DATE May 15, 1989 @ 2:00 PM  
Book 46 B  
Records of Coconino County, Arizona  
HELEN I. HUDDGENS  
County Recorder



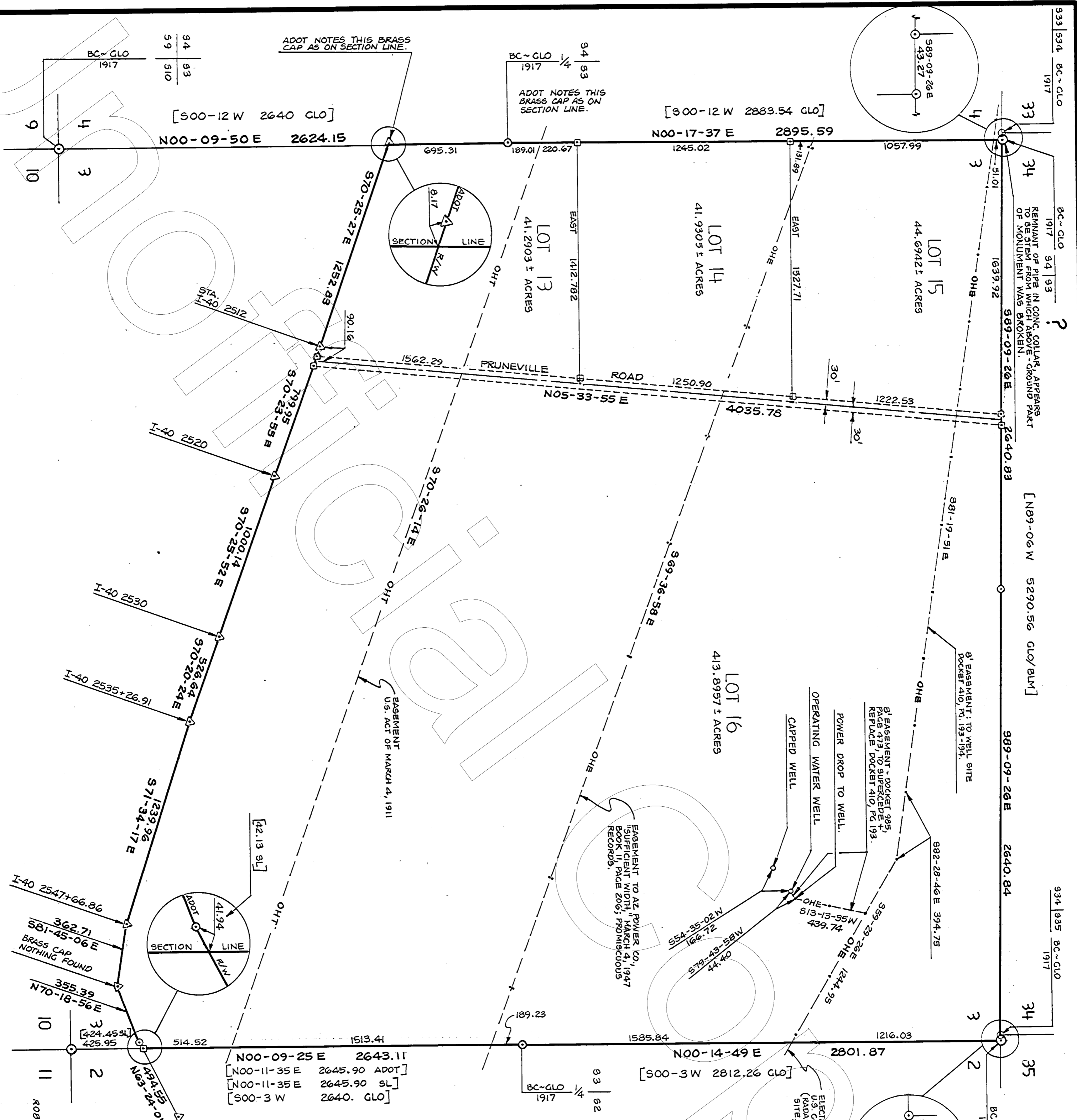
THE BASIS OF BEARING OF THIS SHEET IS THE BEARING OF RECORD OF THE NORTH LINE OF THIS SECTION 12, TOWNSHIP 19 NORTH, RANGE 14 EAST, AS SHOWN ON GLO MAP OF THE 1917 SUBDIVISION. ALL DISTANCES ARE GROUND.

**TURQUOISE RANCH**  
COCONINO COUNTY, ARIZONA  
SECTION 12

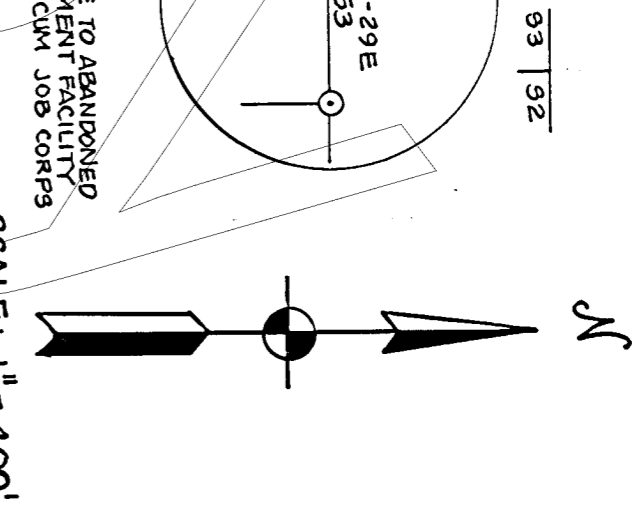
ROBERT BEAMISH, CIVIL ENGINEER - LAND SURVEYOR  
216 WEST FIRST STREET  
WINSLOW, ARIZONA 86047  
(602) 289-3450

1173631 SHEET: 3 OF 6

Book 7 Page 46 B

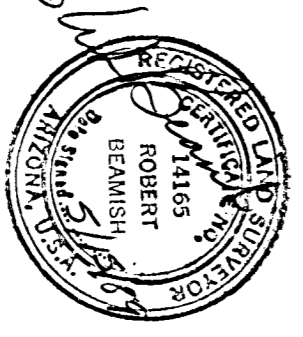


Book 7 Page 46c



THE BASIS OF BEARING OF THIS SHEET IS THE BEARING OF RECORD OF THE NORTH LINE OF THE NEAR BY SECTION 12, TOWNSHIP 19 NORTH, RANGE 14 EAST, AS SHOWN ON CLO MAP OF THE 1917 SUBDIVISION. ALL DISTANCES ARE GROUND.

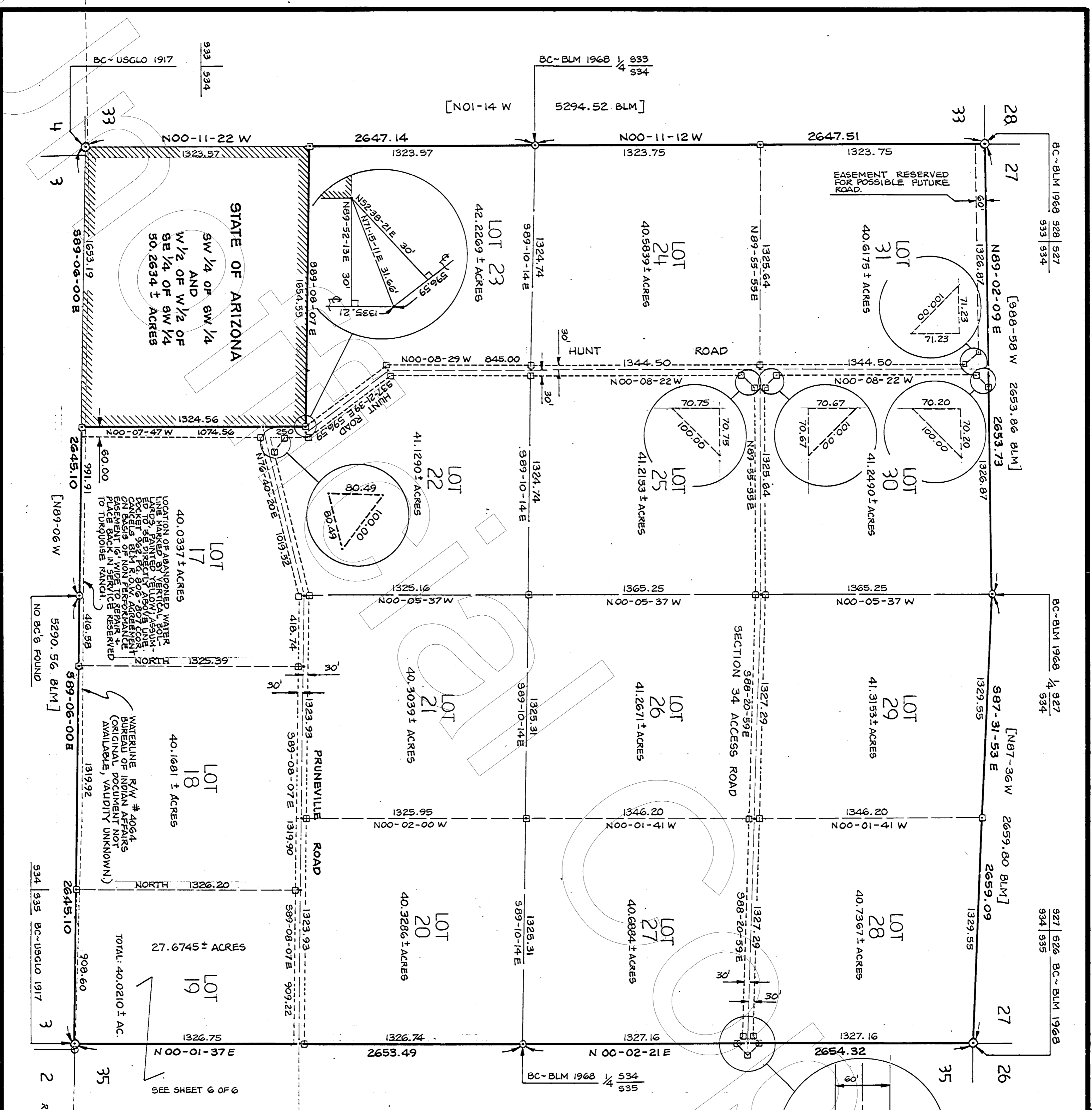
to G. G. G. G.  
 RECORDED AT REQUEST OF  
 ROBERT BERMISH  
 DATE May 15, 1989 @ 2:00 PM  
 H. C.  
 Records of Coconino County, Arizona  
 HELEN I. HUDGENS  
 County Recorder



**Turquoise Ranch**  
 COCONINO COUNTY, ARIZONA  
 SECTION 3

ROBERT BEAMISH, CIVIL ENGINEER - LAND SURVEYOR  
 216 WEST FIRST STREET  
 WINSLOW, ARIZONA 86047  
 (602) 289-3450

Book 7 Page 46 D

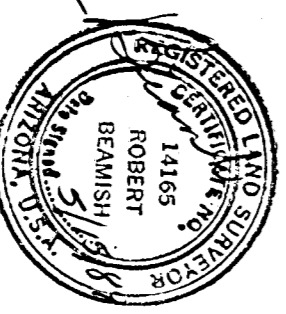


THE BASIS OF BEARING OF THIS SHEET IS THE BEARING OF RECORD OF THE SOUTH LINE OF THIS SECTION 34, TOWNSHIP 19, NORTH, RANGE 14 EAST, AS SHOWN ON GLO MAP OF THE 1917 SUBDIVISION. ALL DISTANCES ARE GROUND.

RECORDED AT REQUEST OF  
**ROBERT BEAMISH**

DATE **Nov 15 1989 @ 2:00 PM**

HELEN L. HUGHES  
COUNTY CLERK



**COCOONINO RANCH-**  
COCOONINO COUNTY, ARIZONA

**SECTION 34**

ROBERT BEAMISH, CIVIL ENGINEER & LAND SURVEYOR  
216 WEST FIRST STREET  
WINSLOW, ARIZONA 86047  
(602) 289-3450

BC- BLM 927 526  
1968 534 535

27  
26

34  
35

26  
25

35  
36

26  
25

35  
36

26  
25

35  
36

26  
25

35  
36

26  
25

35  
36

26  
25

35  
36

26  
25

35  
36

26  
25

35  
36

26  
25

35  
36

26  
25

35  
36

26  
25

35  
36

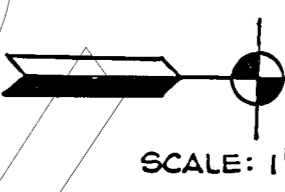
26  
25

35  
36

Book 7 Page 46 E

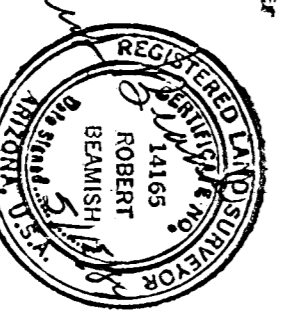
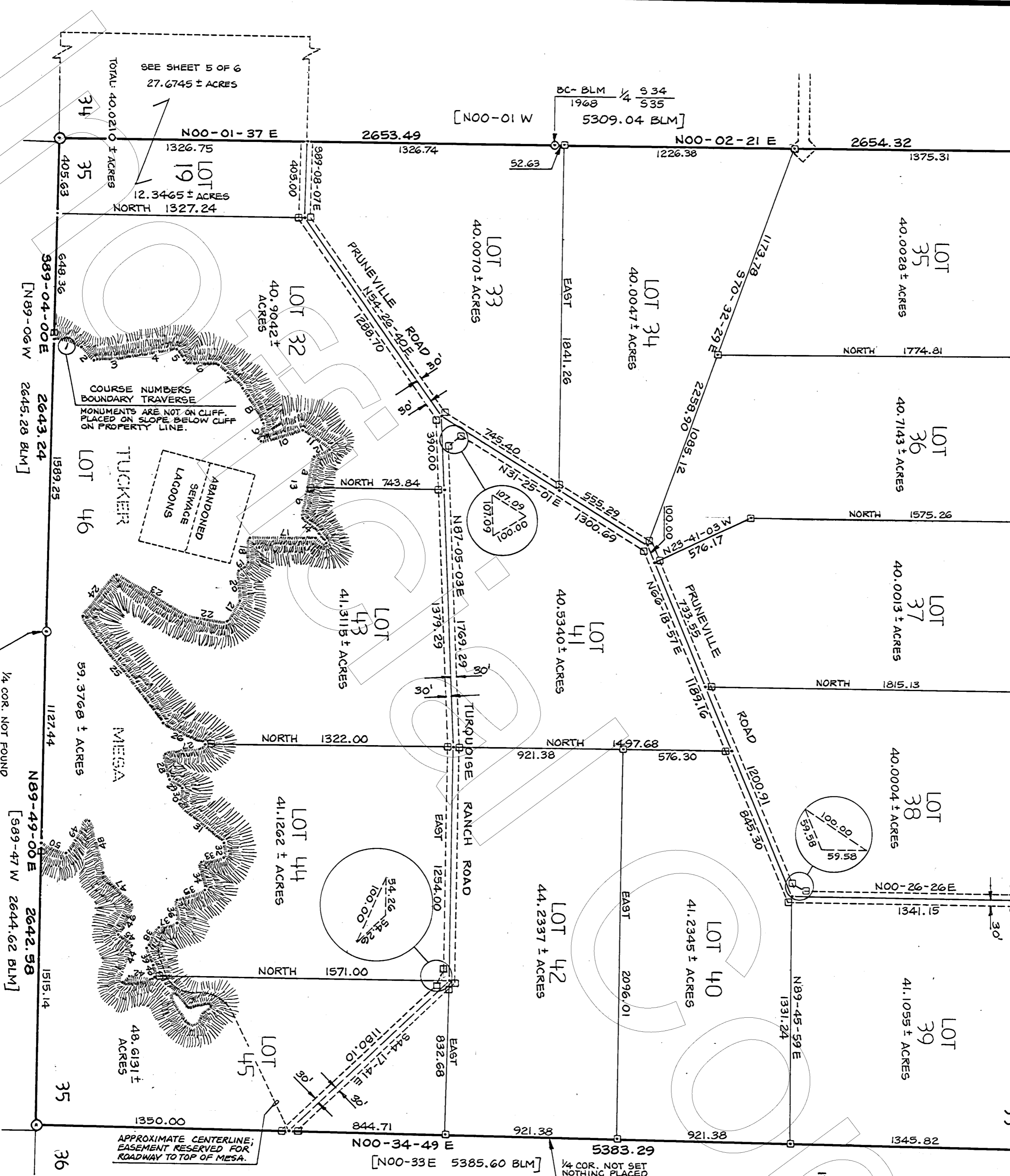
TRAVERSE COURSE:

NORTH BOUNDARY OF LOT 46.  
BOUNDARY IS A 'RECTIFIED' LINE AT  
THE OUTER - UPPER LIMIT OF THE  
RIM ROCK CLIFF AROUND THE MESA.



1. N17-03-32 E 167.54
2. N53-58-21 E 108.81
3. N07-14-13 W 190.52
4. N10-44-34 W 257.51
5. N48-26-51 E 58.80
6. N00-36-46 E 187.01
7. N48-39-08 E 199.81
8. N57-56-17 E 214.76
9. S83-51-46 E 93.54
10. N20-29-33 W 211.38
11. N41-38-01 E 168.58
12. S34-50-45 E 96.26
- 13-3. S86-26-05 E 160.81
14. N42-05-21 E 125.32
15. N45-00-00 E 62.23
16. S20-22-35 W 74.67
17. S01-19-28 E 346.09
18. S87-03-18 E 136.18
19. S40-24-00 E 61.72
20. N86-12-32 E 166.36
21. S59-11-28 E 126.91
22. S07-11-11 W 231.82
23. S30-27-06 W 422.25
24. S52-37-19 E 293.21
25. N51-57-21 E 712.35
26. N25-18-46 E 245.58
27. S15-02-16 E 208.13
28. N80-40-14 E 141.88
29. N37-26-19 E 80.60
30. S80-02-10 E 75.13
31. N41-00-12 E 324.64
32. S75-57-50 E 82.46
33. S11-43-30 E 108.26
34. N84-10-52 E 157.81
35. S24-12-53 E 141.44
36. S75-50-48 E 118.60
37. S17-49-08 E 88.23
38. S62-00-29 E 125.71
39. N68-44-58 E 96.57
40. N81-59-43 E 64.63
41. S18-26-06 E 25.30
42. S05-23-22 W 106.47
43. S46-35-28 E 50.93
44. N78-31-21 W 201.02
45. S43-40-04 W 91.24
46. N67-57-24 W 175.86
47. S54-09-44 W 222.04
48. S66-49-42 W 279.55
49. S53-07-48 E 215.00
50. S21-01-39 W 144.04

THE BASIS OF BEARING OF THIS SHEET IS THE BEARING OF RECORD OF THE SOUTH LINE OF THE ADJACENT SECTION 34, TOWNSHIP 19, NORTH, RANGE 14 EAST, AS SHOWN ON CLO MAP OF THE 1917 SUBDIVISION. ALL DISTANCES ARE GROUND.



**TURQUOISE RANCH**  
COCONINO COUNTY, ARIZONA  
SECTION 35

ROBERT BEAMISH, CIVIL ENGINEER - LAND SURVEYOR  
216 WEST FIRST STREET  
WINSLOW, ARIZONA 86047  
(602) 289-3450

1173631 SHEET : 6 OF 6



SEE SHEET 5 OF 6  
TOTAL 40.0210 ± ACRES  
27.6745 ± ACRES

LOT 19  
12.3465 ± ACRES  
NORTH 1327.24

LOT 32  
40.9042 ± ACRES

LOT 33  
40.0070 ± ACRES

LOT 34  
40.0047 ± ACRES

LOT 35  
40.0028 ± ACRES

LOT 36  
40.7143 ± ACRES

LOT 37  
40.0013 ± ACRES

LOT 38  
40.0004 ± ACRES

LOT 39  
41.1055 ± ACRES

LOT 40  
41.2345 ± ACRES

LOT 41  
40.5340 ± ACRES

LOT 42  
44.2337 ± ACRES

LOT 43  
41.3115 ± ACRES

LOT 44  
41.1262 ± ACRES

LOT 45  
48.6131 ± ACRES

LOT 46  
59.3768 ± ACRES

COURSE NUMBERS  
BOUNDARY TRAVERSE  
MONUMENTS ARE NOT ON CLIFF.  
PLACED ON SLOPE BELOW CLIFF  
TO BE RECALCULATED.

ABANDONED  
SEWAGE  
LAGOONS

TUCKER

MESA

TURQUOISE RANCH ROAD

PRUNIVILLE ROAD

APPROXIMATE CENTERLINE;  
EASEMENT RESERVED FOR  
ROADWAY TO TOP OF MESA.

1/4 COR. NOT FOUND  
NOTHING SET  
LOCATION PROPORTIONAL  
TO BLM DATA

BC- BLM 927 526  
1968 534 535

BC- BLM 927 526  
1968 534 535

BC- BLM 927 526  
1968 534 535

BC- BLM 927 526  
1968 534 535

BC- BLM 927 526  
1968 534 535

BC- BLM 927 526  
1968 534 535

BC- BLM 927 526  
1968 534 535

BC- BLM 927 526  
1968 534 535

BC- BLM 927 526  
1968 534 535

BC- BLM 927 526  
1968 534 535

BC- BLM 927 526  
1968 534 535

BC- BLM 927 526  
1968 534 535

BC- BLM 927 526  
1968 534 535